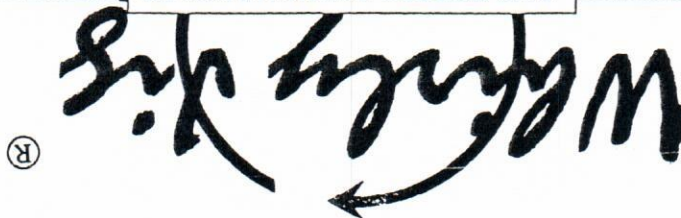


THIS JIG IS NOT INTENDED FOR USE WITH FULLY  
ASSEMBLED CAR.  
REMOVE FRONT FENDERS, HOOD, ENGINE,  
TRANSMISSION, SUSPENSION AND BUMPERS.  
YOU ARE DEALING WITH HEAVY LOADS SO USE  
EXTREME CAUTION!  
FOLLOW EACH STEP CAREFULLY.  
READ ENTIRE INSTRUCTION BOOKLET BEFORE  
PROCEEDING.  
THEN PROCEED CAREFULLY ONE STEP AT A TIME.

**ASSEMBLY AND INSTALLATION  
INSTRUCTIONS  
READ CAREFULLY!**

THE BETTER BODY HANDLER



For further information call or write:

*Winsky Jig*

Warren Emerson  
Eric Emerson  
4700 Hwy 641S.  
Paris, TN 38242  
(731) 642-0660



**ITEMS YOU WILL NEED TO COMPLETE YOUR INSTALLATION:**

- 4 Jack Stands (3 or 6 ton)
- 1 Floor Jack (2 1/4 ton)
- 1 or 2 3 Ton Hydraulic long rams, round bottom.
- 2 2" I.D. Pipe at least 18" (They come in 21' lengths), available through your local plumbing or industrial supply company.
- Ask for 2" schedule 40 black iron pipe.

**DO NOT USE SQUARE TUBING TO CONNECT BASES.** Square tubing is not easily removed for access under car body for dollies, floor jacks or engine hoists.

**YOUR WHIRLY JIG CONSISTS OF:**

- 2 Base Stands with Wheels
- 2 Rear Body Mounting Brackets
- 2 Inner Posts (one with sprocket lock) 2 "T" Brackets
- 2 Cross Bars
- 1 Small Parts Package
- 2 Front Mounting Brackets
- 1 Safety Bolt Package

When you receive your Whirly Jig, the inner posts are installed sideways in the base stands for shipment only.

**INSIDE ONE OF THE BASE RECEIVERS IS THE SMALL PARTS PACKAGE CONSISTING OF:**

- 12 1/2-13 x 1 1/2" bolts.
- 1 1/2-20 x 1 1/2" bolt.
- 4 1/2" flat washers.

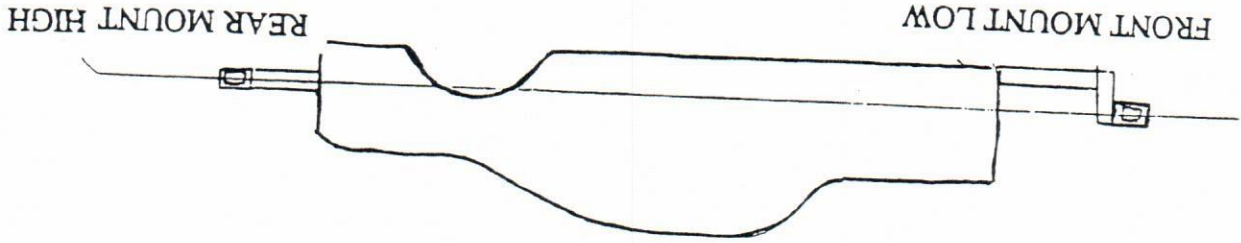
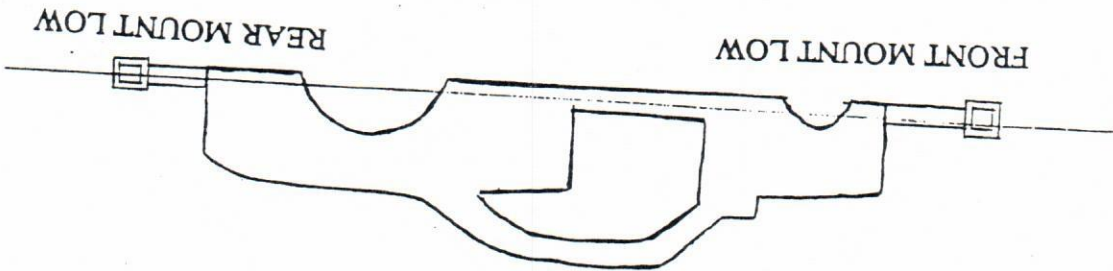


# HELPFUL HINTS FOR FABRICATING AND MOUNTING BRACKETS TO FRAME

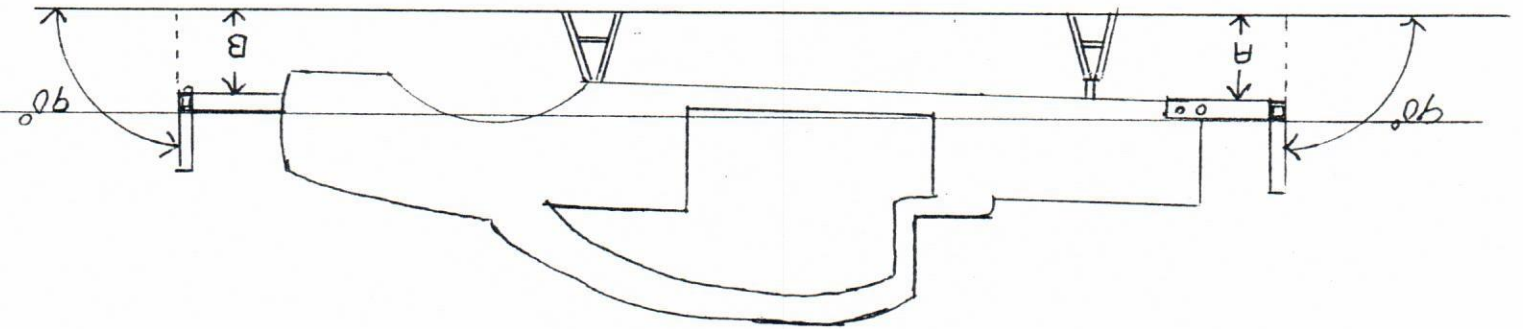
The body or frame brackets must be fabricated and drilled to mount to bumper mounting points only. For body off frame restoration, refer to "Frame Off Restoration Made Easy".

The bumper bracket area on the body or frame must be structurally sound or must be repaired before mounting the brackets.

All mounting brackets must be mounted on the same plane. This is easily done by setting body and/or frame on jack stands. Adjust stands so that the bolt pattern on the frame is the same measurement from the floor at each end of frame. Mount brackets to frame at each end so that they are level. When the brackets are level and the same measurement off the floor they will be on the same plane. **THIS IS THE MOST IMPORTANT STEP IN SETTING UP THIS EQUIPMENT.** If this step is not done correctly the body could bind when rotating on the rotisserie.

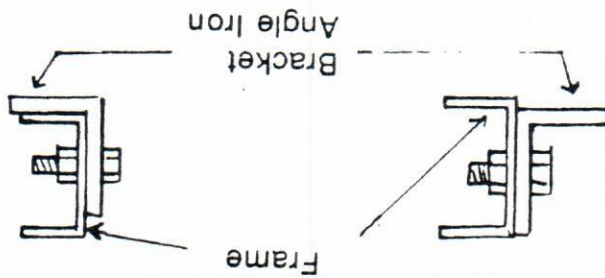


**Test bracket alignment before attaching bases  
to cross bar and brackets.**

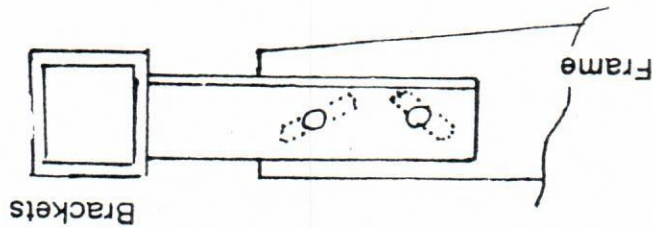


- 1 (A = B) Bracket distance off floor must be the same at both ends of body.**
- 2 Cross bar verticals must be at 90° angle with floor.**

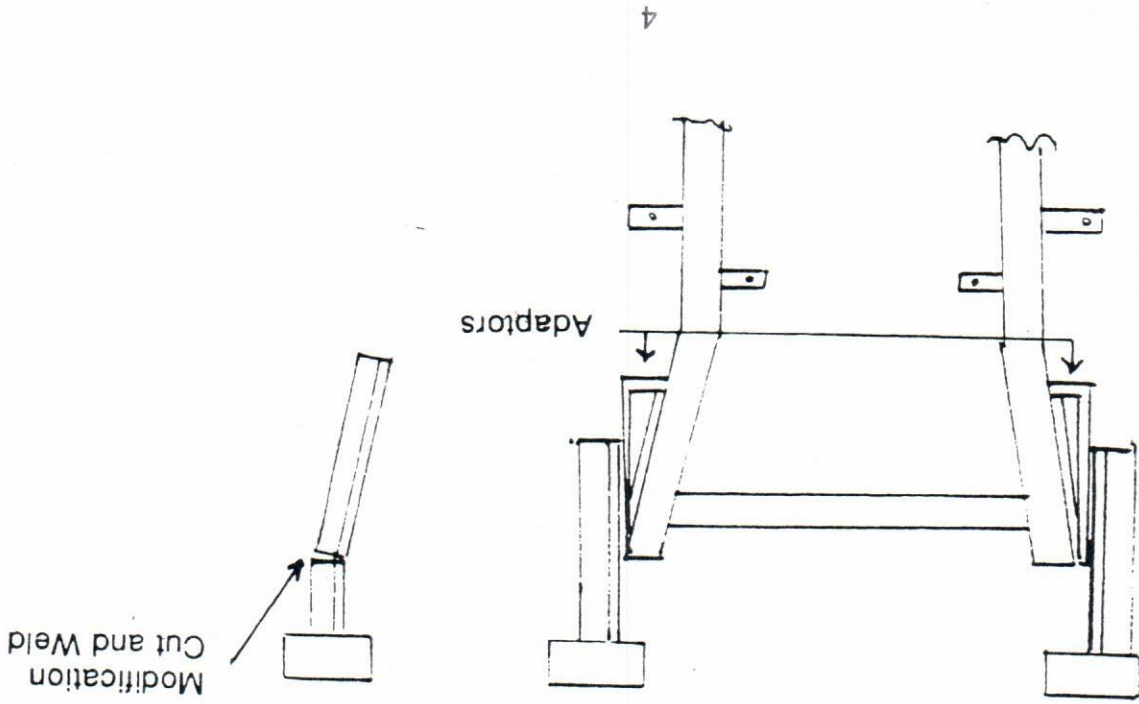
Angle brackets must make solid contact to frame but frame may mount to either side of angle. Select the most rigid system.



When bracket is bolted onto a slotted frame, be sure brackets can not shift in slots. Use large thick washers over slotted part of frame.

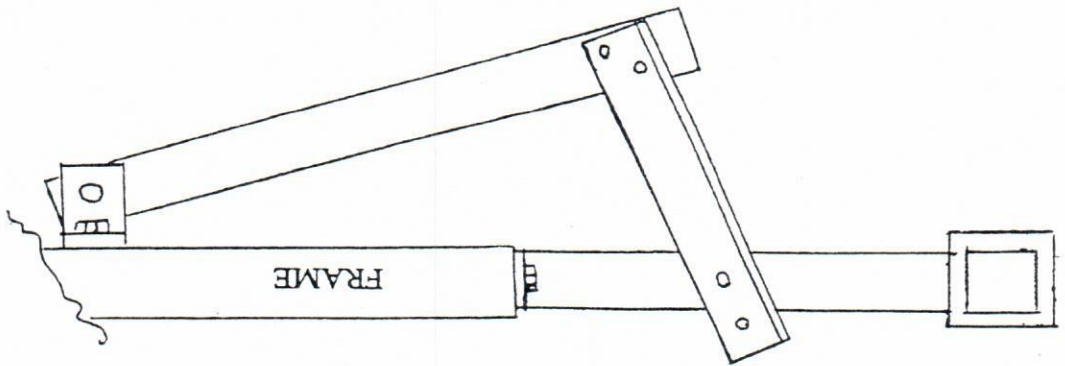


For irregular frames, either make adaptors or modify brackets.

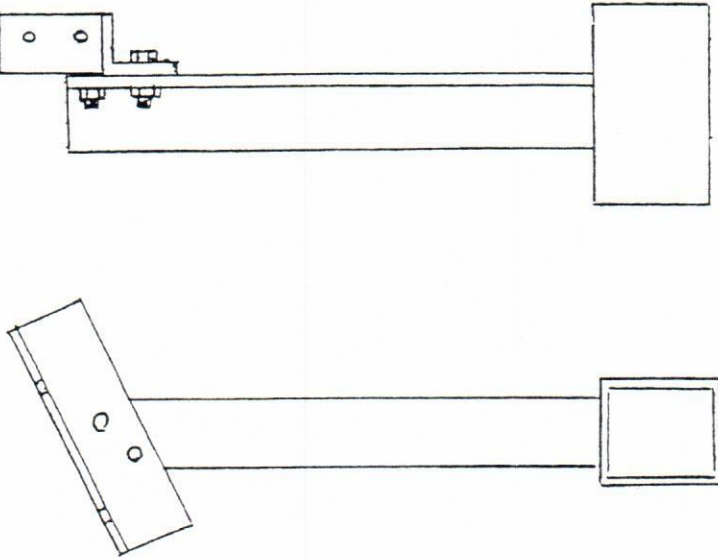


When the bumpers mount to the end of a body or frame rail as on the rear of Mustang's Camaros or Roadrunners, a stiffener is suggested.

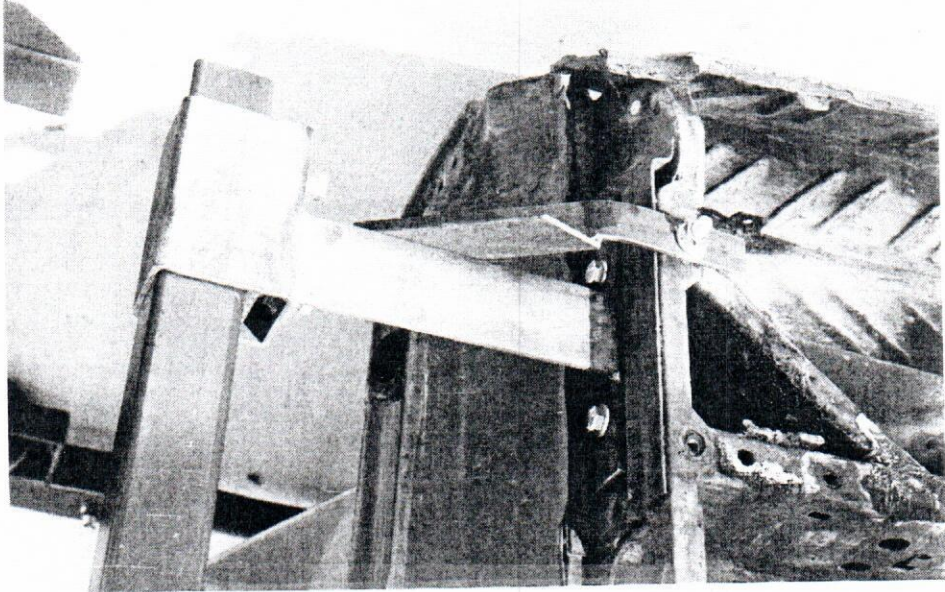
BRACKET MOUNTED TO END OF FRAME  
WITH BRACKET STIFFENER



ADAPTOR BOLTED TO STANDARD BRACKET





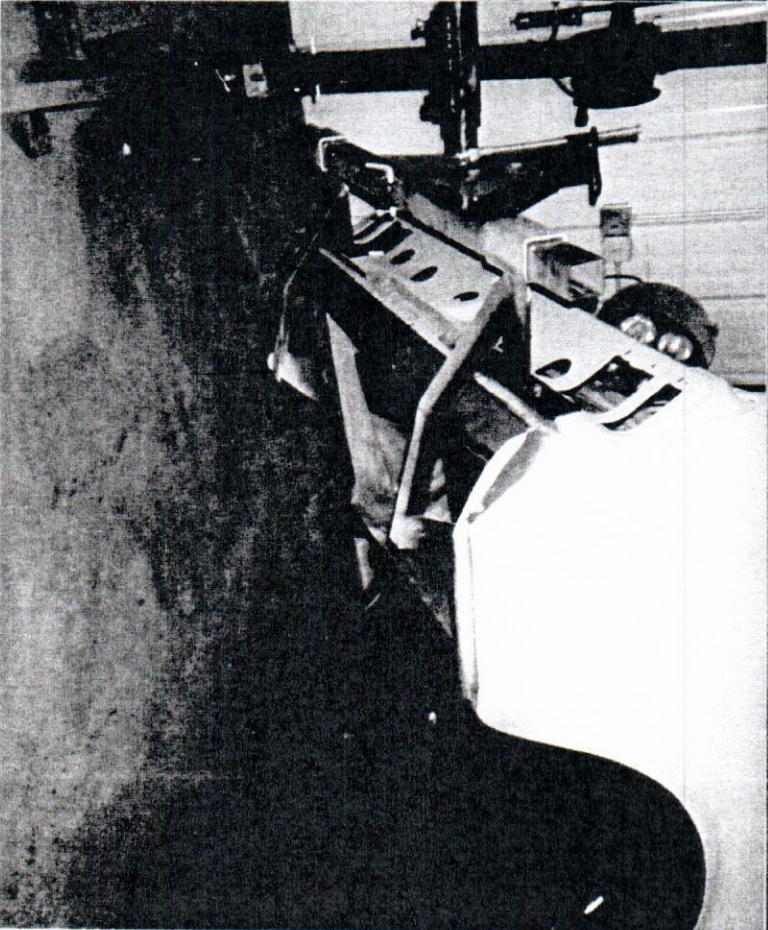
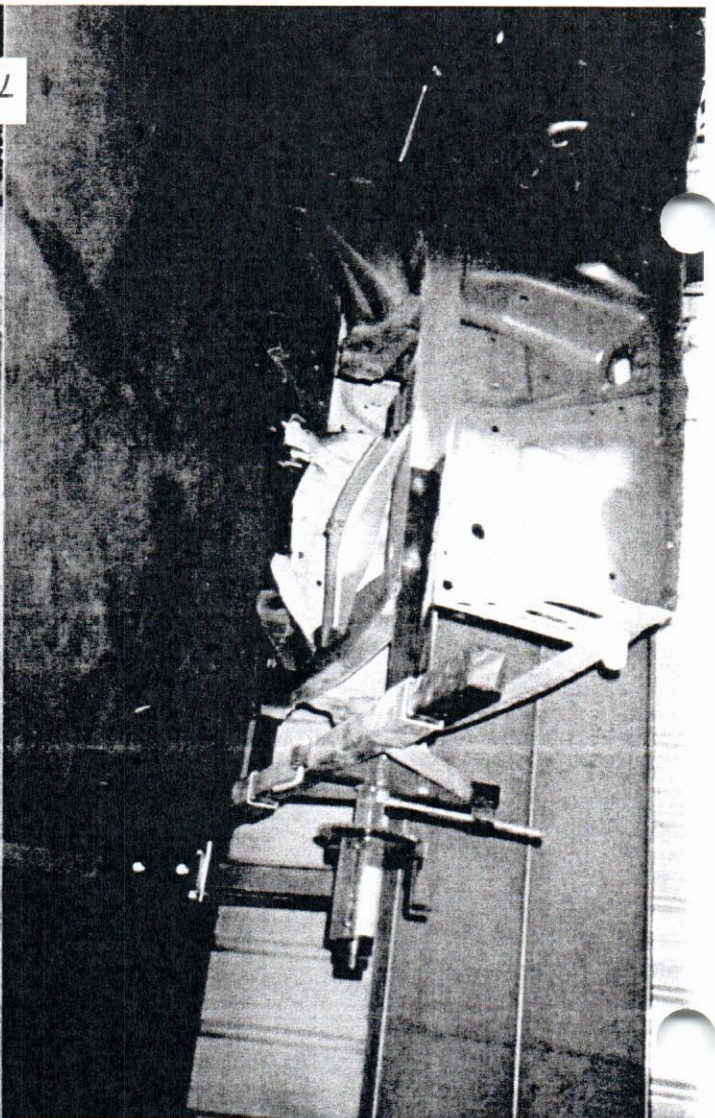
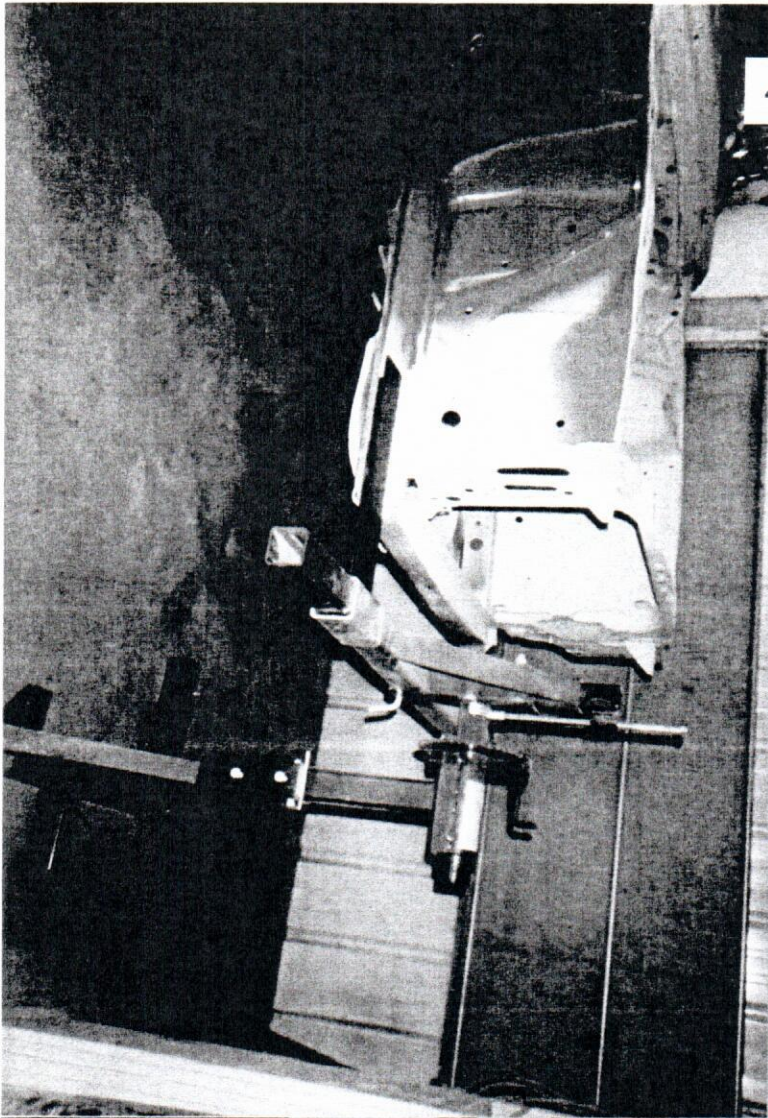


Rear mounting bracket stiffener.

This shows a B body Chrysler with a stiffener installed. Other cars such as Camaros , Mustangs, Challengers will require a stiffener.

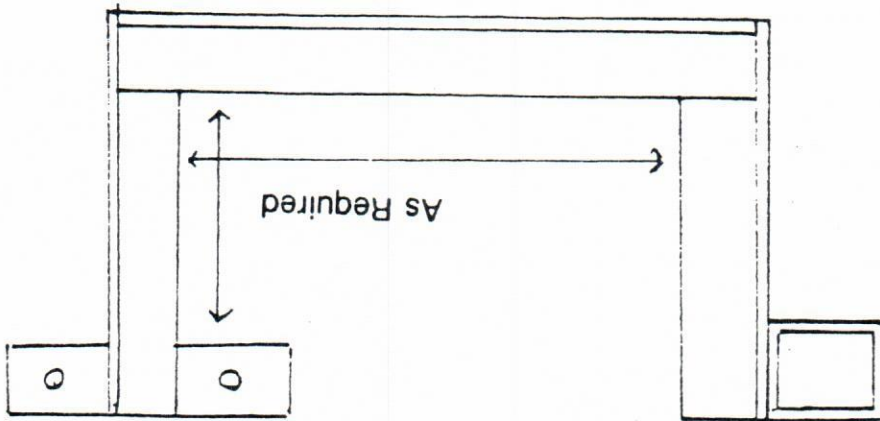


7





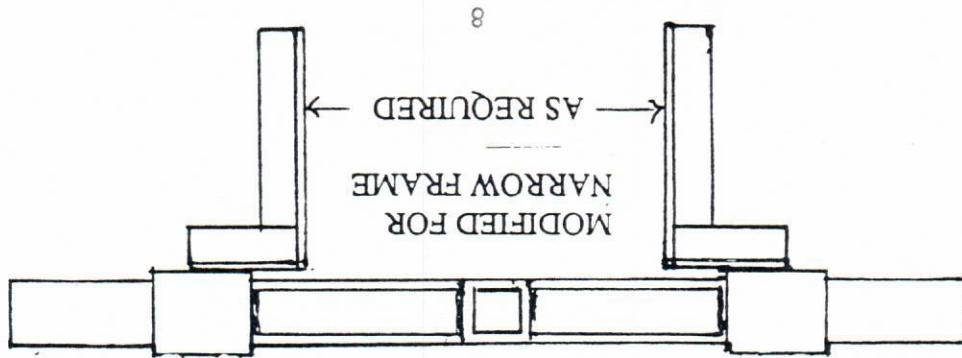
Occasionally there is no direct approach to the frame. The fender or rear valance may not be removable or the bumper bracket opening may be too small to install a bracket. This is most often found on foreign cars such as Jaguar or MG. Approaching the frame from below is a simple solution.

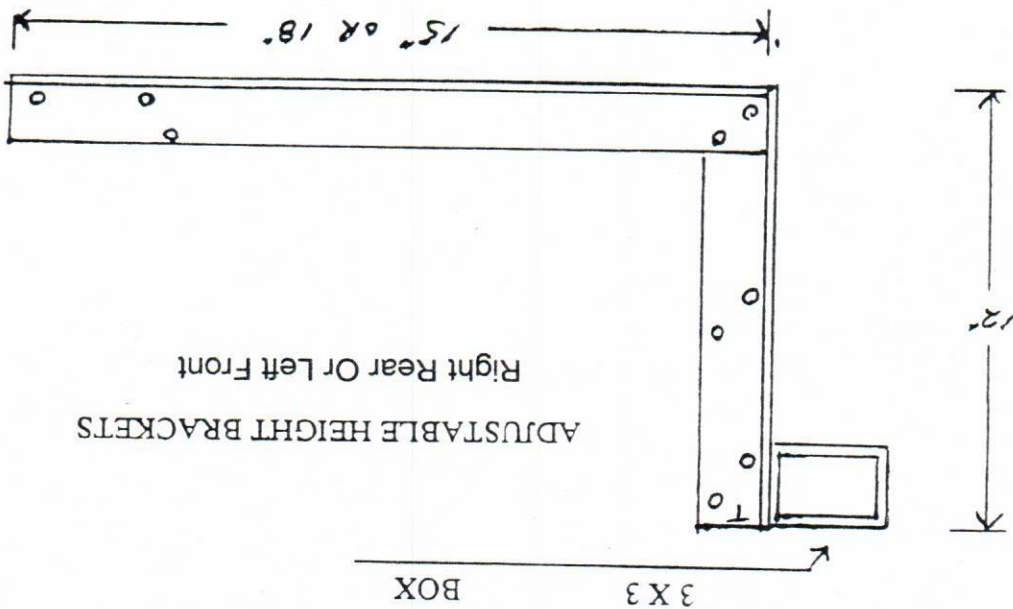


No modification should ever be made to the cross bar or base stands of the Whirly Jig. Any modifications necessary to accommodate a special body or frame must be made to the brackets only.

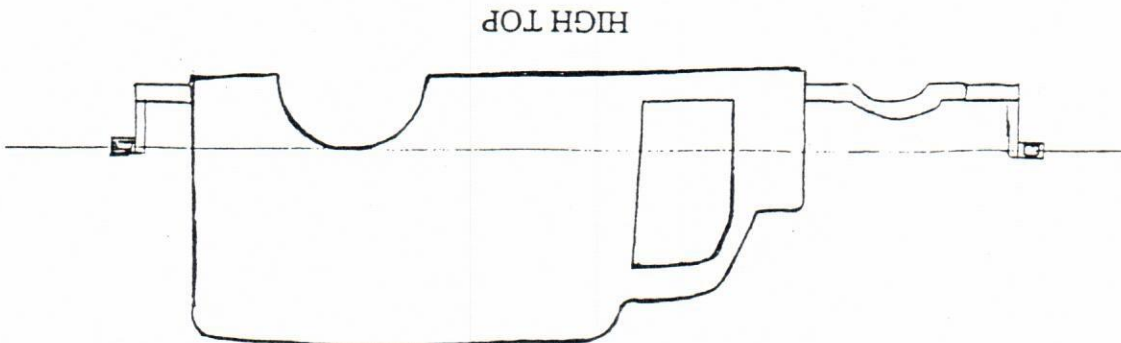
If frame rails are too narrow for the brackets provided with the Whirly Jig, the brackets can be modified or new brackets made. They can be fabricated as shown below, by using 2"x2"x1/4" or 2"x3"x1/4" angle iron.

CROSS BAR



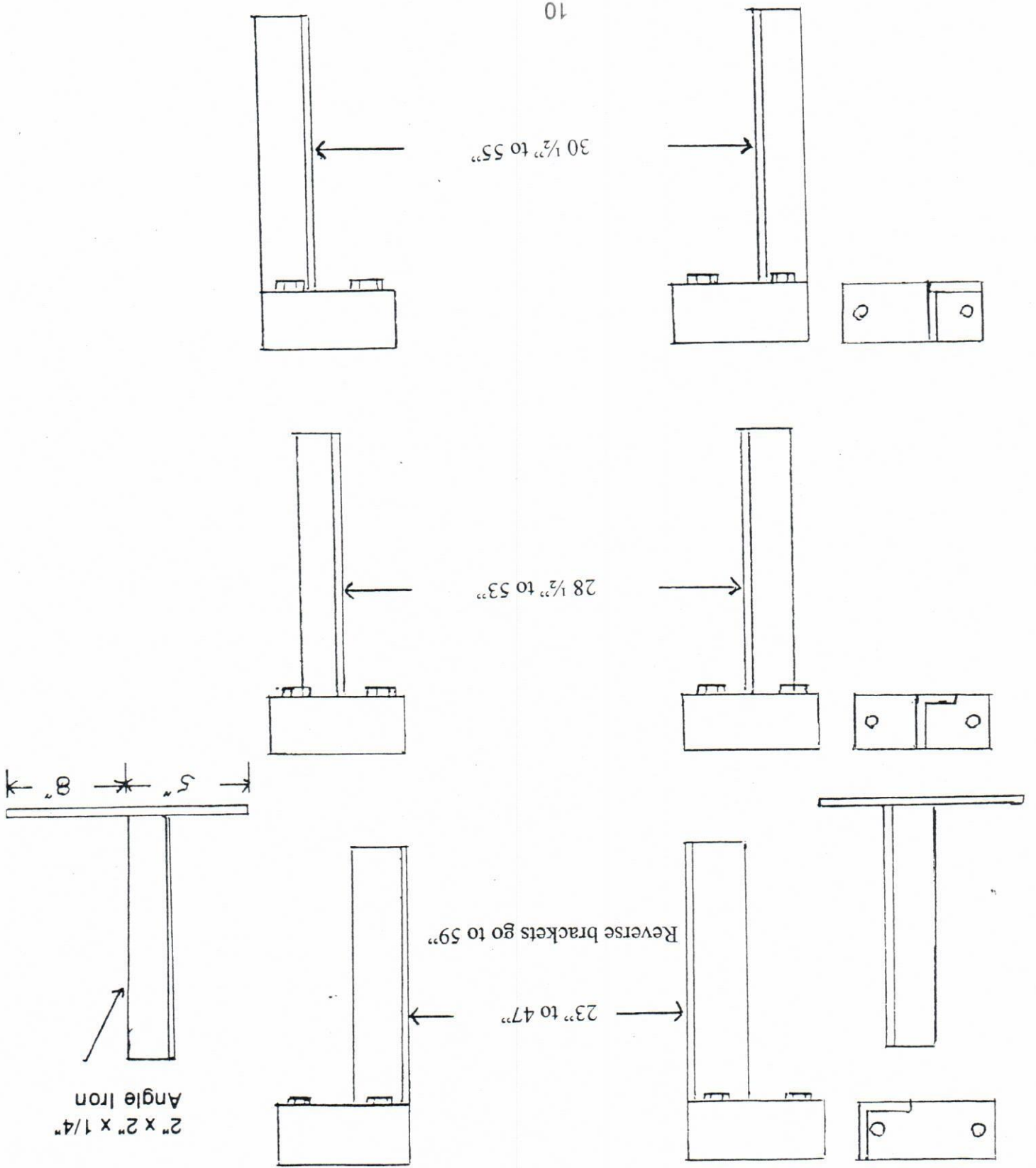


When you have a delivery sedan or other top heavy body style that can not be balanced with the stock brackets, fabricate brackets that will lower body on cross bar. Adjustable brackets are available from Whirly Jig. These brackets have three different mounting heights.

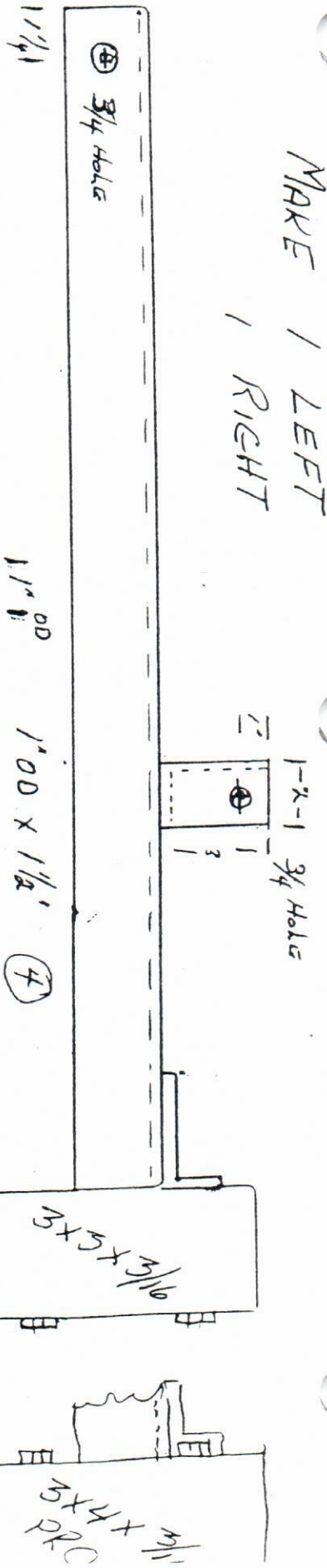




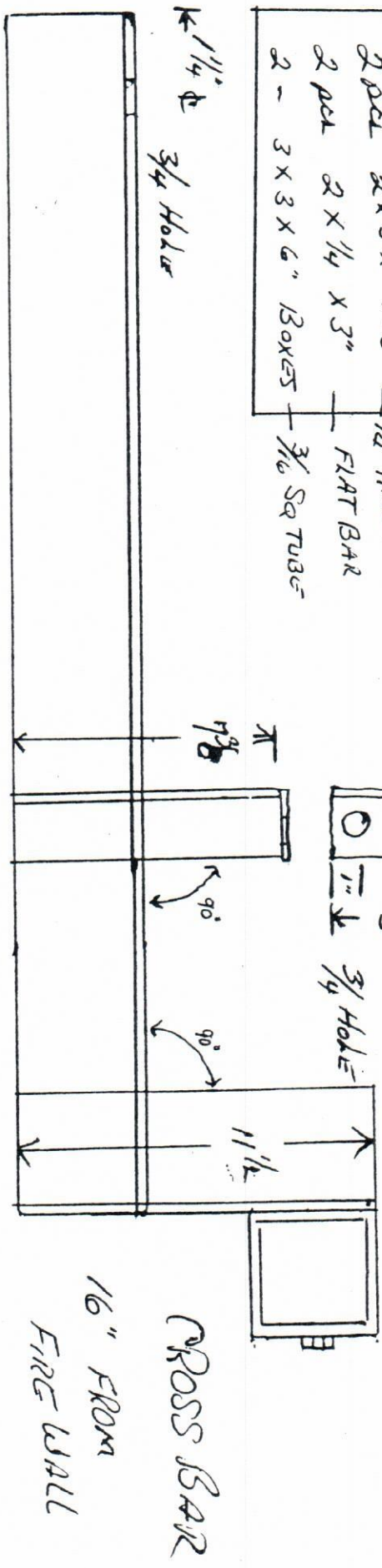
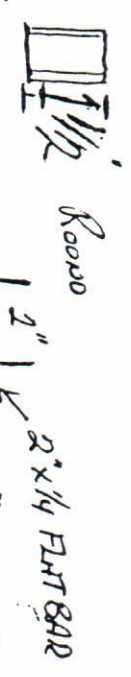
FRAME RAIL (OUTSIDE TO OUTSIDE)  
FOR PRO WHIRLY JIG, WELD AS REQUIRED



MAKE / LEFT  
/ RIGHT



- 2 pcs 2 X 3 X 48
- 2 pcs 2 X 3 X 11 1/2
- 2 pcs 2 X 3 X 7 3/8
- 2 pcs 2 X 1/4 X 3"
- 2 - 3 X 3 X 6" BOXES
- 1/4" ANGLE
- 1/4" ANGLE
- 1/4" ANGLE
- FLAT BAR
- 3/16 Sq TUBE



69 CHAMBER FRONT

14' 7" L.O.H.



